

# BIONTX

## WOMEN DRIVING INNOVATION

March 8, 2024

Thank you for your support!



### WELCOME & INTRODUCTION



#### Kathleen Otto

CEO  
BioNTX

Kathleen M. Otto, CEO of BioNTX, a not-for-profit industry trade organization, affiliated with the Biotechnology Innovation Association, [www.BIO.org](http://www.BIO.org), based in Washington D.C. BioNTX is the bridge between businesses and job opportunities, providing direct cost savings services, networking events, and educational programming to the bioscience and healthcare community in North Texas.

Ms. Otto most recently served as the Executive Director of BioBAT, Inc., the New York City Science and Technology Center at the Brooklyn Army Terminal. BioBAT's mission is to refurbish the historic Brooklyn Army Terminal on the NY harbor into sophisticated laboratories offering BsL2, ISO 7/8 manufacturing space, and office space serving the local, national, and international commercial Biotech industry.

Prior to BioBAT, Ms. Otto was VP of Business Development and Programing at BioNJ, bringing over 20 years of marketing, sales, and operations experience to the leadership of the New Jersey Biotech Association. BioNJ is also a State affiliate of the global Biotechnology Innovation Organization based in Washington D.C. and is a membership and government lobbying organization. Her extensive experience creating and executing numerous educational and networking forums for the biopharma, diagnostics and life sciences industry were well recognized. During her tenure at BioNJ, Ms. Otto initiated strategic alliances with industry leaders across the life sciences continuum including Higher Education, R&D, the Investor Community, Pharmaceutical and Health Care related industries.

Ms. Otto graduated from Bryn Mawr College as a McBride Scholar and previously served as Board Member and Treasurer of the Princeton Chapter of the Bryn Mawr College Alumnae Club.



#### Betsy Branch

Partner  
Ernst & Young

With over 28 years of accounting experience, including 25 years in public accounting, Betsy Branch, a Dallas-based EY audit partner, brings a unique perspective and set of experiences to her clients, with her background in both industry and public accounting.

Having worked across several EY offices/regions during her career, including Houston, Tulsa, and the Bay Area (California), Betsy has served a broad array of clients, ranging from large multi-national publicly traded companies to privately held, early-stage start-up businesses in the technology and life science markets. Betsy has extensive technical knowledge of and experience with complex accounting and business issues related to revenue recognition, inventory, impairments, business combinations and stock-based compensation. She also has a variety of SEC related experience, including initial public offerings and internal control reporting.

Betsy is a graduate of the University of Oklahoma with a Bachelor of Accountancy Degree and a Bachelor of Business Administration Degree in International Business. Betsy is a licensed Certified Public Accountant in Texas and California, as well as a member of the American Institute of Certified Public Accountants.

# LESSONS FROM WOMEN FOUNDERS OF LIFE SCIENCE & HEALTHCARE INNOVATION STARTUPS



## **Ayse McCracken, MBA**

Founder

**Ignite Healthcare**

Ayse McCracken brings a unique combination of business credentials, healthcare industry knowledge, and a transformative mindset to companies aspiring to challenge the healthcare status quo. After serving three decades as a senior executive in some of the country's most prominent healthcare systems, Ayse focused her knowledge and energy on businesses seeking to revolutionize the delivery of healthcare and in 2017 she formed eNOVATE Health Ventures LLC. Today, her company serves as a business advisor to CEOs and executives leading digital health and med device startups positioning for growth as well as advising investors interested in those sectors.

In 2019, Ayse founded Ignite, a not-for-profit organization, that brings together dynamic women executives leading healthcare transformation. Ignite's various programs now reach national and international audiences. Ignite's accelerator has become among the few global programs focusing on women-led digital health and med device startups and has connected 106 selected startups with access to over \$4M in investment capital, countless pilots, and strategic advisors.

Ayse earned an MBA from the Red McCombs School of Business at the University of Texas in Austin. She received a bachelor's degree in business / accounting from Louisiana State University. A lifelong student, Ayse has attended programs at Harvard's School of Public Health and at MIT.



## **Elyse Dickerson, MBA**

CEO

**Eosera**

Elyse Stoltz Dickerson is CEO and Co-Founder of Eosera, Inc., a female-led biotech company committed to developing innovative products that address underserved healthcare needs in the ear care industry. Eosera has products in over 28K retail stores nationwide, including major retailers like CVS, Walgreens, Walmart, Rite Aid, Albertsons, and Kroger.

Prior to Eosera, Dickerson spent thirteen years in the biotech industry, where she managed portfolios with annual revenues of \$1.7 billion and drove product innovation and the commercialization of numerous technologies across the globe. With over two decades of experience leading teams in the healthcare and pharmaceutical industries, Dickerson shares her learnings and expertise in pieces she's authored for outlets such as Forbes, Women of Influence, and Global Connections for Women on the topic of how women can succeed in business, specifically in STEM.

Dickerson holds a BA from the University of Notre Dame and an MBA from the Cox School of Business at Southern Methodist University. Additionally, she completed The Integral Leadership Program and The Advanced Leadership Program at the Stagen Leadership Academy. Dickerson, married with two children, resides in Fort Worth, Texas. She is also a lifelong athlete and has completed marathons, triathlons, and an Ironman.



## **Lyndsey Harper, MD, FACOG, IF**

Founder & CEO

**Rosy Wellness**

Lyndsey Harper, MD is the Founder and CEO of Rosy, an app for women with decreased sexual desire and other sexual problems. Dr. Harper created Rosy out of frustration when she couldn't find a modern and accessible resource to help her many patients with this problem. Rosy is a resource to connect the 84 million women in the US with sexual problems with hope, community, and research-backed solutions to improve their lives. In 2023, Dr. Harper and Rosy were awarded with the Women's Health Innovation Summit (WHIS) Judge's Choice Award.

Dr. Harper completed Ob/Gyn residency in 2011 at Baylor Scott & White Health in Dallas, Texas, and Dr. Harper saw patients in private practice for seven years and now is a hospitalist. Dr. Harper is Associate Professor of Ob/Gyn for Texas A&M College of Medicine, a Fellow of The American Congress of Obstetricians and Gynecologists, and a Fellow of the International Society for the Study of Women's Sexual Health.

## SPOTLIGHT ON HEALTHCARE BUSINESSWOMEN'S ASSOCIATION (HBA)



### **Stephanie Collins**

DFW Chapter Program Volunteer

#### **Healthcare Businesswomen's Association**

Stephanie Collins, Co-Founder and Managing Partner of BioLaunch Solutions, has dedicated over three decades to the biopharma industry, focusing on rare diseases and innovative therapies. With a foundation in nursing and degrees in biology and nursing from Texas Woman's University, her approach is uniquely patient-centered, blending clinical care with strategic business insights. Her career reflects a deep commitment to enhancing patient outcomes, evident in her leadership in launching transformative therapies and her active role in national disease awareness campaigns.

Based in Dallas, Texas, Stephanie's work spans complex commercial strategies and the development of high-performing teams, making significant contributions to the fields of pharmaceuticals and biotech. She is known for her ability to navigate the sector's challenges, bringing first-in-class therapies to market, and mentoring the next generation of industry leaders. Her involvement with Professional Patient Advocates in Life Sciences (PPALS), the Healthcare Businesswomen's Association (HBA), and Women in Bio (WIB) highlights her influence and dedication to healthcare innovation.

## WOMEN LEADING THE WAY IN MANUFACTURING



### **Victoria Wilmore**

Director of Serialization and Change Control

#### **Johnson & Johnson**

Victoria Wilmore is an innovative supply chain leader who combines technical expertise, passion for people development, and care for the world to impact patients. She currently leads a global team at Johnson & Johnson focusing on serialization and change management at external manufacturers of pharmaceutical products. During her 17+ years with J&J, she has worked in various areas of the supply chain including transportation and logistics, medical device manufacturing, and supplier management. She is most proud of her involvement in the launch of the Janssen COVID-19 vaccine where she set up the cold chain network to deliver product safely and compliantly to governments worldwide. She currently resides in Grapevine, TX with her husband and two elementary-age children.



### **Jill Baker, MEd**

COO

#### **Signature Biologics**

Jill Baker joined Signature Biologics in 2019 and was named COO in February, 2022. Signature Biologics is a biopharmaceutical company developing novel cellular and biologics to provide medical relief to patients with unmet clinical needs. She is responsible for leadership of operational areas including Strategy, Human Resources, IT, Marketing, Communications and Facilities Management. She has over 20 years of diverse operational experience within industries including manufacturing, biotechnology, retail, finance, nonprofit and higher education. She is an experienced leader with a proven track record for creating successful business strategies, attracting and developing human capital, leading change, and innovating systems and processes so that companies can scale and grow. Jill earned a Master of Education degree from Columbia University in New York.



### **Tammi Carter**

Former CEO

#### **E4D Technologies**

Tammi Carter, a C-Suite Executive, began her career as a medical clinic receptionist. She has navigated the intricacies of both private- and publicly-held organizations, spanning start-up, high-growth and turnaround operations across diverse industry sectors including Industrial Goods & Equipment, Aerospace & Defense and most recently the Medical Devices industry. With a global operational and sales perspective, Tammi is known for her strategic vision, transformational leadership, and development of high performing teams which has resulted in high levels of execution and financial results.

Thriving for several years as a single mother in male-dominated environments, she's committed to propelling the next generation of women leaders. As an executive coach, Tammi shares insights, resilience, and mentorship with other women executives.



## **Yun Jeong Song, MD**

President

**Matica Holdings**

Dr. Song, President of Matica Holdings, had served the past 3 years as the CEO of Matica Biotechnology, a CDMO that specializes in cell and gene therapy. She has over 20 years of experience in life sciences, ranging from basic research to patient care to the development of immuno-oncology therapies.

She received her MD from Seoul National University College of Medicine and completed residency in internal medicine at Albert Einstein Medical Center. She then completed clinical fellowship in rheumatology, with a heavy emphasis on basic immunology research at the National Institutes of Health (NIH).

Her industry career started at Samsung (SAIT), where she led the translational and clinical development strategy for a novel antibody targeting a receptor tyrosine kinase. She then worked at Sanofi R&D as clinical director. In that position, she helped develop multiple immune modulating agents, including an anti-IL-6Rc antibody approved by regulatory agencies worldwide.

## **SPOTLIGHT ON BLACK WOMEN IN SCIENCE AND ENGINEERING (BWISE)**



## **Lauren Adegoke, MS**

Chief of Staff

**Black Women in Science and Engineering**

Lauren is the Chief of Staff of Black Women in Science and Engineering (BWISE). At BWISE, a nonprofit focused on empowering and developing under-represented women in science and engineering, she is part of the Fellowship program learning about business in the STEM field. She holds a Bachelors and Masters in Biomedical Engineering from The University of North Texas. Her diverse background from working at a large pharmaceutical company and a few non-profits make her unique and adaptive as a scientist and engineer.

She hopes to inspire other young black women to be bold and take a chance in the hopes of "leveling-up" in their STEM careers. In her free time, Lauren enjoys yoga and caring for her indoor and outdoor garden.

## **SPOTLIGHT ON WOMEN IN SCIENCE AND HEALTHCARE (WISH) NETWORK**



## **Jovelyn Castellanos, MHA**

Director of WISH

**Health Wildcatters**

Jovelyn Castellanos is a motivated, mission-driven, and dedicated to advancing healthcare, fostering innovation, and promoting health equity. Her profound passion for health equity, strategic communications, innovation, and community development drives her commitment to making a positive difference in the community. Ms. Castellanos is a dynamic leader with a diverse skill set and a passion for driving positive change as exemplified in her various professional and volunteer activities who is focused on leaving a lasting impact on the communities she serves.

In the realm of community development, Ms. Castellanos has played a pivotal role in healthcare, economic development, education, and workforce initiatives. She spearheaded Parkland Health's vaccine education and outreach initiatives during the COVID-19 pandemic across Dallas County, fostering relationships with community leaders, strategic executives, nonprofits, and grassroots initiatives. These efforts led to minority communities of color and special populations, including refugee, immigrant, and migrant communities, getting vaccinated and receiving access to care through creative programming approaches and partnerships with organizations such as Dallas Independent School District, Dallas County, International Rescue

Aside from her passion to improve health outcomes, she is also the Director of the Women in Science in Healthcare (WISH) Network, focusing on inspiring and increasing female entrepreneurship in healthcare innovation through mentorship and resources.

## WOMEN INVESTING IN WOMEN'S SUCCESS

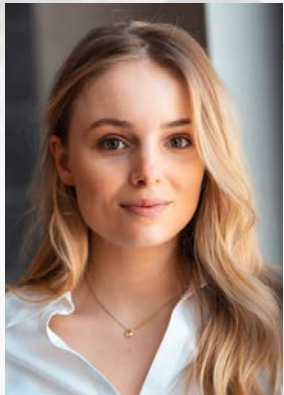


### **Erin Glass**

M&A and Executive Liability Advisor  
**Lockton Companies**

Erin is a consultant and producer specializing in Strategic Risk Management for Life Science and Healthcare companies. Erin has a diverse background consisting of Life Sciences and Healthcare experience, starting and running her own company, and eight plus years working in mergers & acquisitions and capital markets so she understands risk management from multiple perspectives. She believes this experience gives her a unique advantage and skill set when working with her clients.

Erin has spent her entire career focused on making sure her clients have the right resources at the right time and lives by the same principles found in the book, The Go-Giver by Bob Burg and John David Mann. She prides herself on her ability to connect people and if she can't help directly within her role at Lockton, she will introduce you to someone who can.



### **Rebecca Allan, PhD**

Senior Analyst  
**BoxOne Ventures**

Rebecca Allan is a Senior Analyst at BoxOne Ventures. Her passion for entrepreneurship combined with her expertise in medicinal chemistry allow her to support and evaluate companies in deep tech to drug discovery, and everything in between. During her studies, Rebecca was an Amplitude Ventures Fellow, Front Row Ventures Investment Associate, and independent consultant for multiple drug discovery startups.

Rebecca holds a Master's in Chemistry from Cardiff University and a Ph.D. in Chemistry from the University of Toronto, with a specialization in small molecule therapeutics and rare diseases.



### **Heather Antioquia**

Senior Director of Program Development  
**Xontogeny**

Heather currently serves as Senior Director of Program Development at Xontogeny where she collaborates cross-functionally to construct strategic initiatives and priorities and works with team leadership to operationally execute across the portfolio. These activities span design and optimization of early preclinical through clinical development, identifying and building upon existing KOL and vendor relationships, and maintaining a pulse on the industry. Heather has been with Xontogeny since it was founded in 2016, starting as an Associate with the investment team to support the build out of the company's due diligence process before moving to portfolio-related activities in 2021.

Heather obtained her MBS degree from Keck Graduate Institute, a specialized program that focuses on translating ideas into commercial products in the biopharmaceutical industry across all modalities and therapeutic areas. She has an entrepreneurial background stemming from several years of breast cancer cell research and the development of a novel diagnostic for early detection of sepsis while acquiring her undergraduate degree at Southwestern University. She is particularly passionate about rare diseases and serves as an advocate through her athletic endeavors on American Ninja Warrior and is also actively involved in local and regional mentorship through programs such as Nucleate.



### **Vicki Gaddy, SPHR**

Vice President, Portfolio Company Operations,  
HR & Talent Strategy  
**Deerfield Management**

Vicki Gaddy is the Vice President, Portfolio Operations, HR & Talent Strategy on the External Operations team at Deerfield Management and joined the firm in 2017 to support companies in which Deerfield invests. Prior to Deerfield, Ms. Gaddy was the Vice President of Talent Services with BioNJ. While there she led the effort to create supportive services to connect employers with talent and provide HR advisory services to the industry. Her career has included human resources leadership roles at biotech and high technology companies, several of which were early-stage organizations. Ms. Gaddy holds a B.A. in Business Administration with a concentration in Human Resources Management from American Intercontinental University, where she graduated summa cum laude and was awarded lifetime certification as a Senior Professional in Human Resources Management from the HR Certification Institute.



## **Tania Martin-Mercado, PhD, MS, MPH**

President & CEO

**Phronetik**

Dr. Tania Marie Martin-Mercado, MS, MPH, affectionately known as Dr. Tania, stands at the forefront of clinical research, wielding her expertise to pioneer advancements in genomics, precision medicine, public health, and the crucial integration of diversity, equity, and inclusion within clinical studies and healthcare at large. Her profound knowledge and innovative approach have been instrumental in designing and leading groundbreaking scientific and technical programs. These initiatives are pivotal in evaluating the safety and efficacy of therapeutic regimens, medications, and novel interventions aimed at preventing, diagnosing, and treating various diseases.

Dr. Tania's illustrious career commenced in the military, where she dedicated two decades to serving in the United States Army and Army Reserves, culminating her distinguished service as a Chief Warrant Officer 2 (CW2) specializing in cyber information systems and cyberwarfare. Transitioning from military to civilian life, Dr. Tania channeled her leadership and technical acumen into the realm of biomedical research. She founded a biomedical research company focused on conducting cutting-edge clinical research in genomics and data science. Her entrepreneurial spirit also led her to establish a digital health company, where she developed a patent-pending medical device kit for at-home chronic disease management. This innovative product garnered an Innovation Award at the International CES in 2015 and was highlighted in Tech Republic's 2016 Issue for its groundbreaking potential.

Dr. Tania's research endeavors, particularly in identifying genetic variations and biomarkers in patients with systemic lupus erythematosus, underscore her dedication to genomics and its transformative impact on precision medicine. Her passion for advancing healthcare through genetic insights is matched by her commitment to ethical and inclusive practices in clinical research, a commitment reflected in her active membership with the Association for Clinical Research Professionals (ACRP).

Her academic achievements are as remarkable as her professional ones, holding a PhD in Biomedical Informatics, an M.S. in Technology Management, and a Master of Public Health. Beyond her professional and academic endeavors, Dr. Tania is deeply engaged with her community. She contributes her time and expertise to the Girl Scouts of Northeast Texas STEM Advisory Council, nurturing the next generation of female leaders in science and technology.

### **SPOTLIGHT ON WOMEN IN BIO (WIB)**



## **Gina Ford, MBA**

Executive Director

**Women in Bio**

Gina Ford is a highly experienced professional with 20 years of expertise in life sciences, biotech and pharmaceutical industries. Throughout her career, she has held leadership roles in Corporate Strategy, Commercial, Portfolio Management, Business Development and Patient Advocacy. As the principal of One Joule, LLC, a corporate strategy consulting firm she founded, Gina provides strategic advice to life science clients on various aspects of their business, including company formation, corporate strategy, fundraising, dealmaking, and US commercial and globalization strategies. In her recent Executive and C-Suite roles at OncoSynergy, NephroSant, and Crinetics Pharmaceuticals, Gina was responsible for Corporate Strategy, Corporate Development and Commercial Planning where she helped drive growth and development for these companies.

Gina is a Doctor of Pharmacy with an MBA. She is an accomplished start-up and growth phase expert, sought after for her successful fundraising experience at all levels. Early in her career, Gina was the executive director for the International Academy of Compounding Pharmacist. Her long-term focus on patient advocacy highlights her commitment to the life science industry's core mission of improving patient outcomes through innovative therapies and treatments.